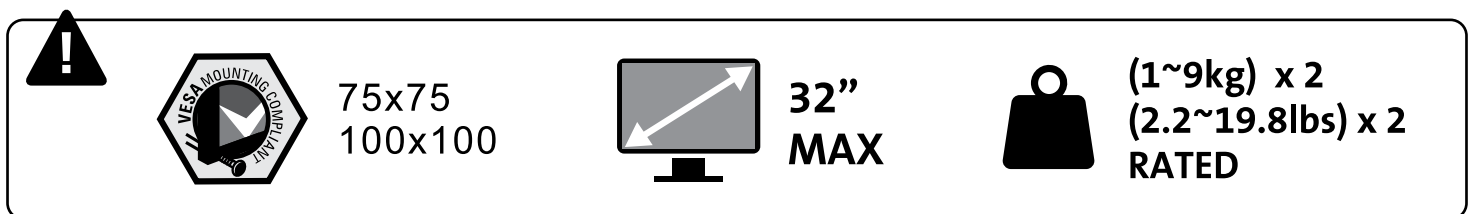
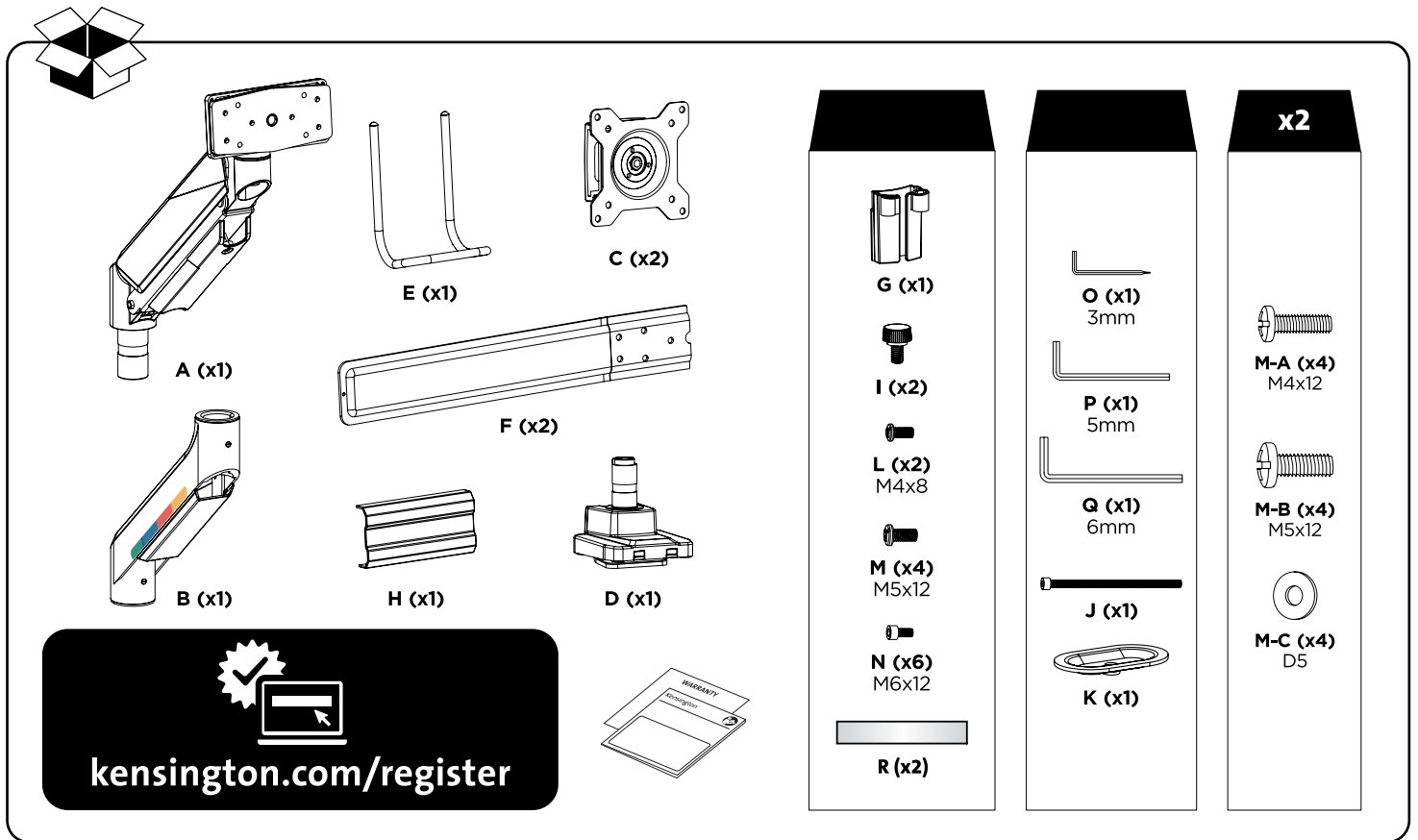
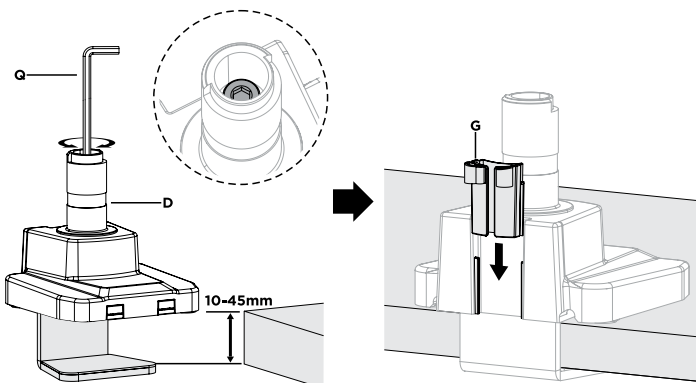




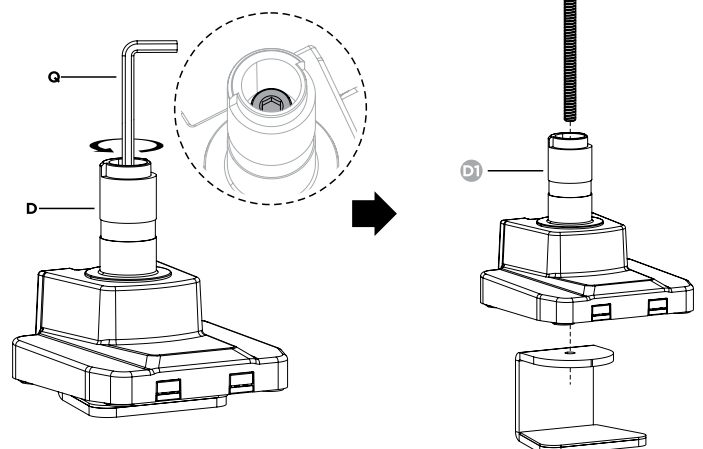
## SmartFit™ Dual Monitor Arm with Crossbar and Handle

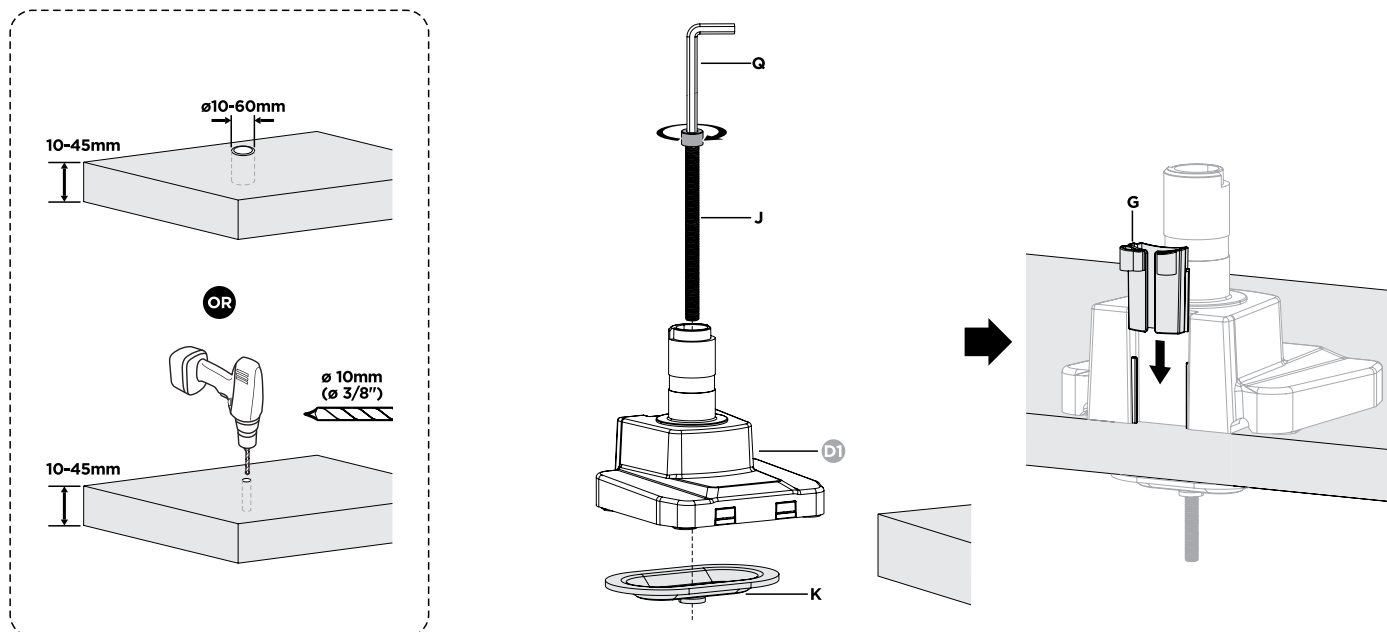


### 1 CLAMP INSTALLATION

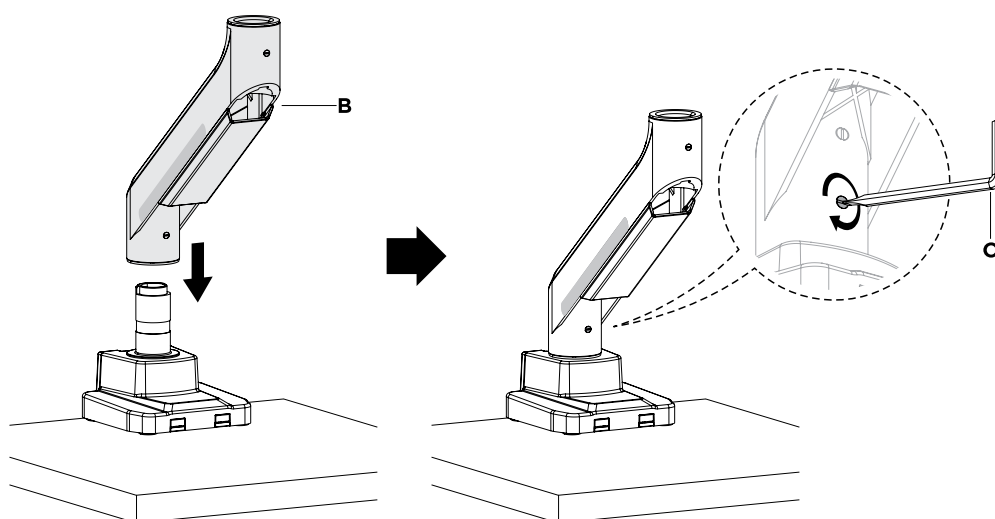


### GROMMET INSTALLATION

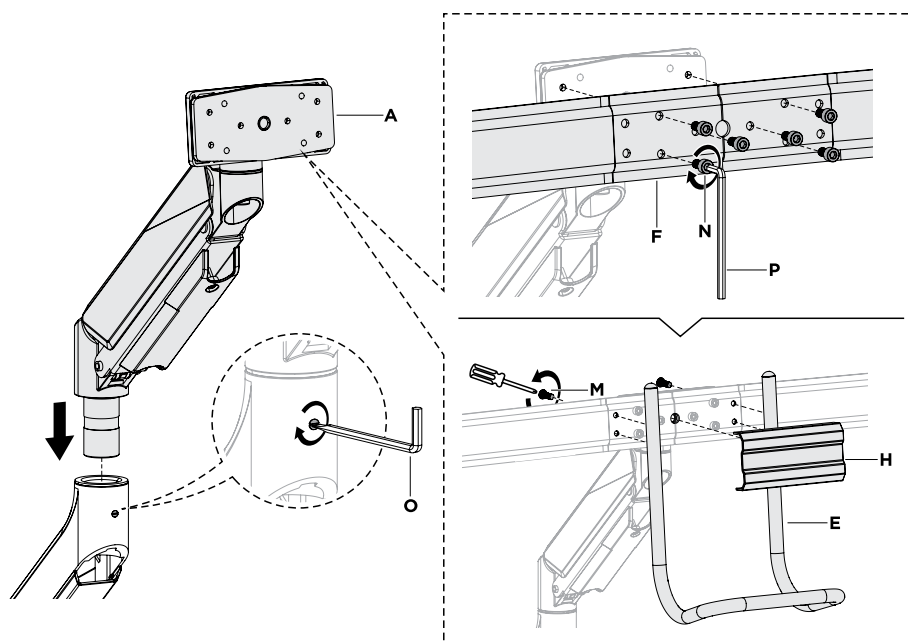




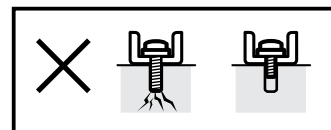
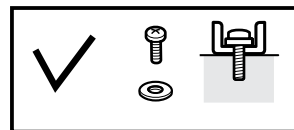
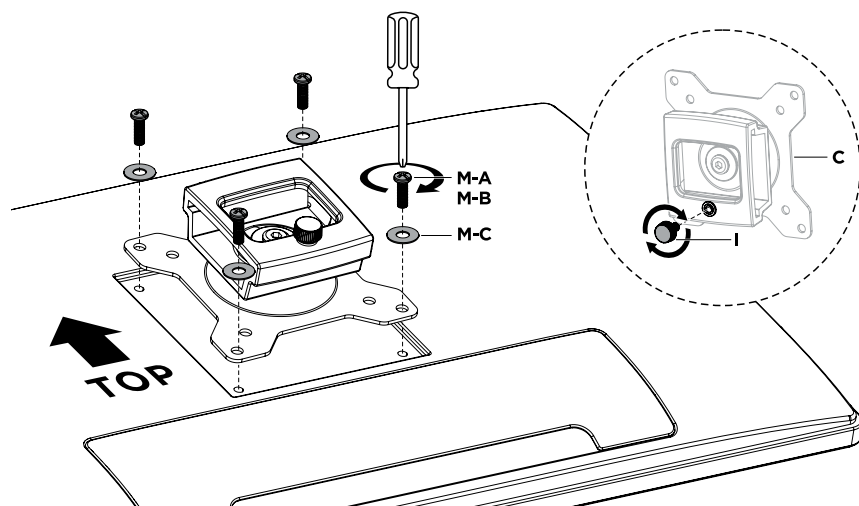
2



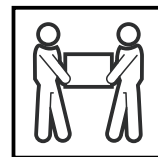
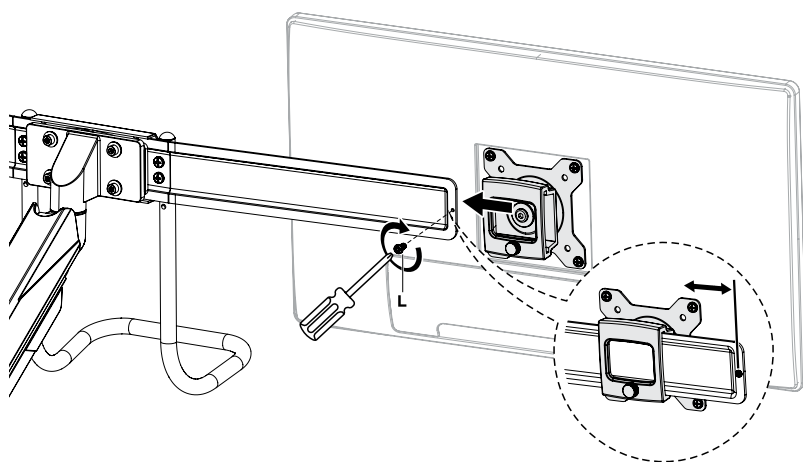
3



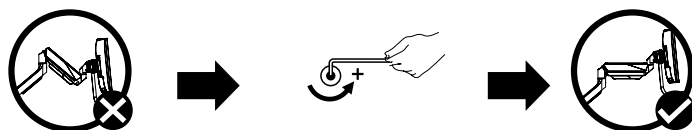
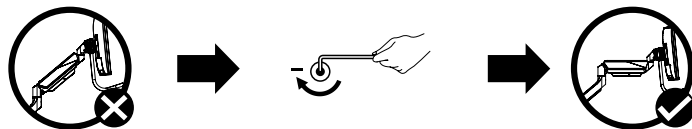
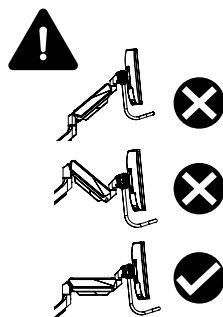
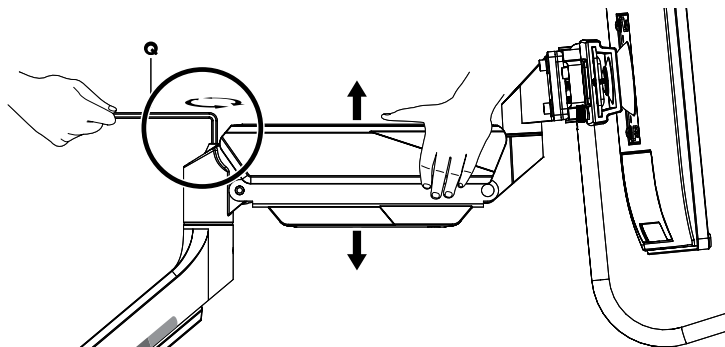
4



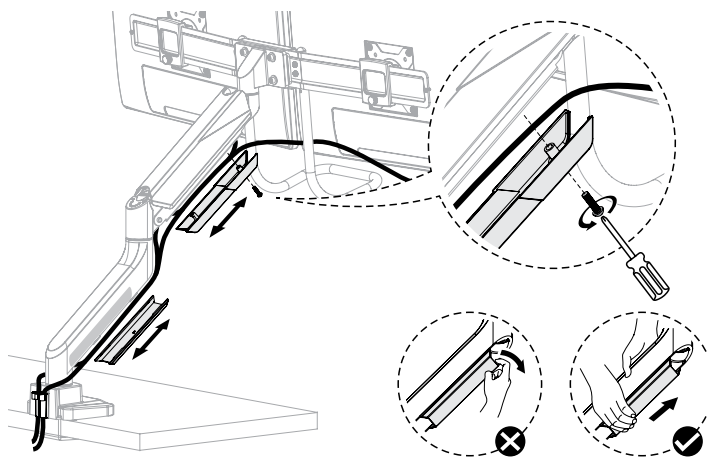
5



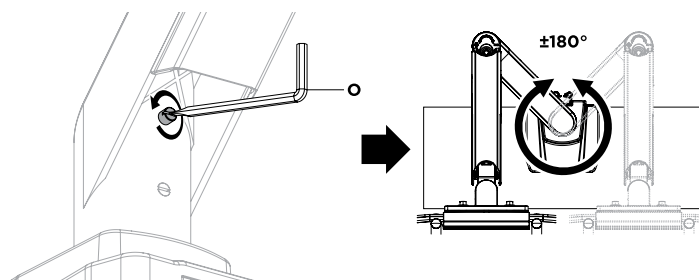
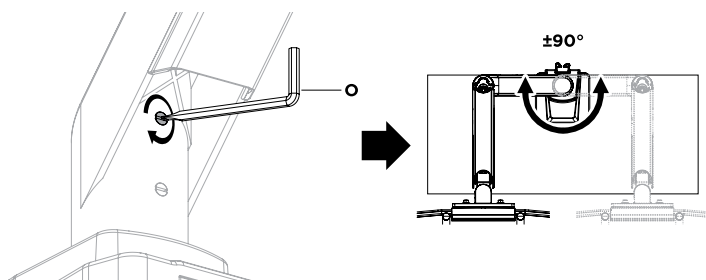
6



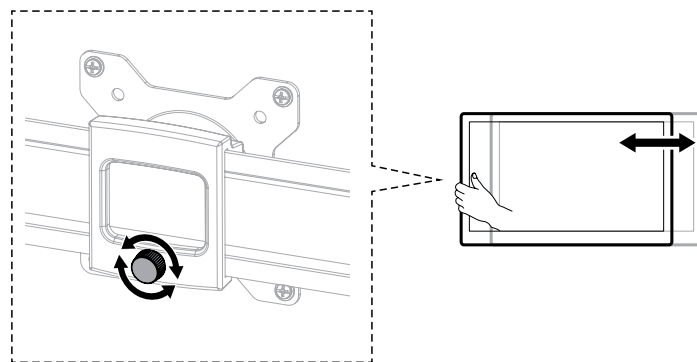
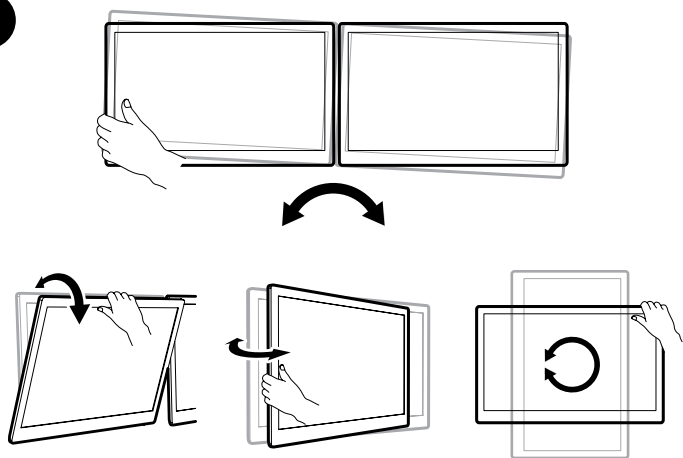
7



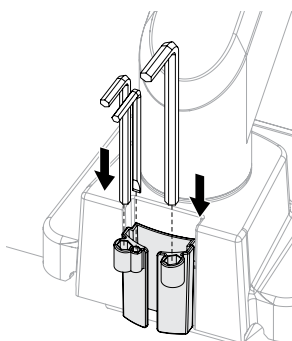
8



9

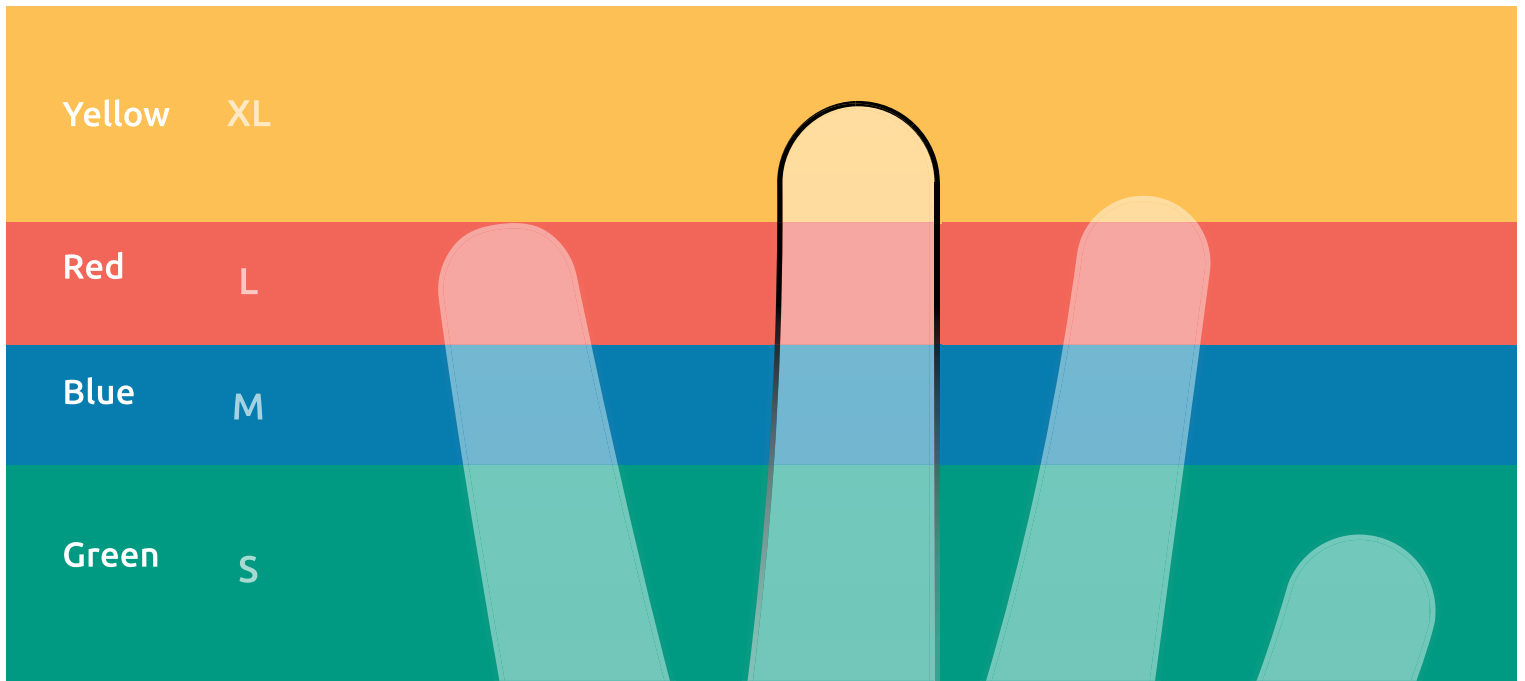


10



A

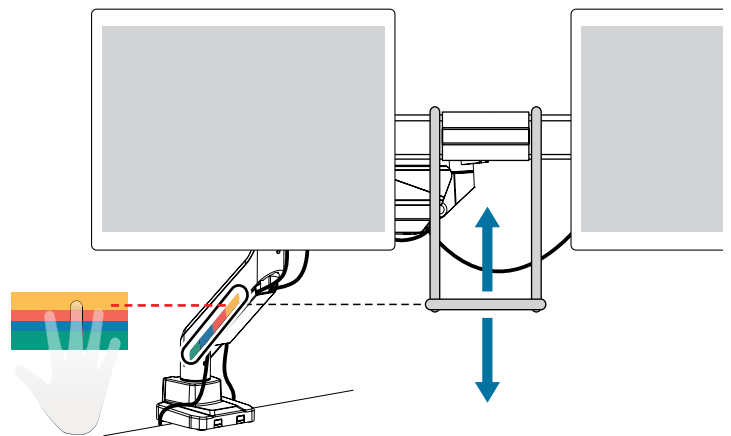
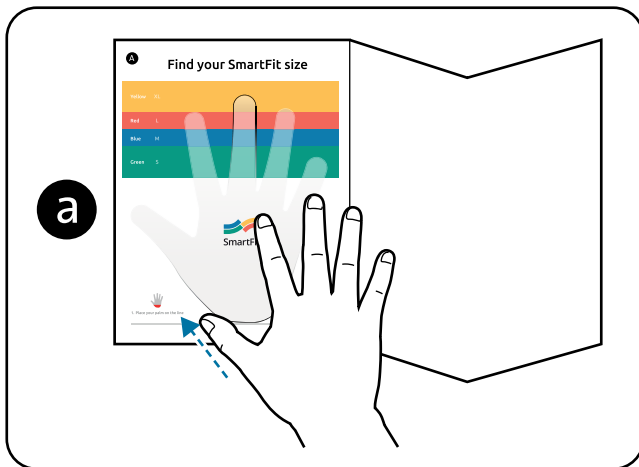
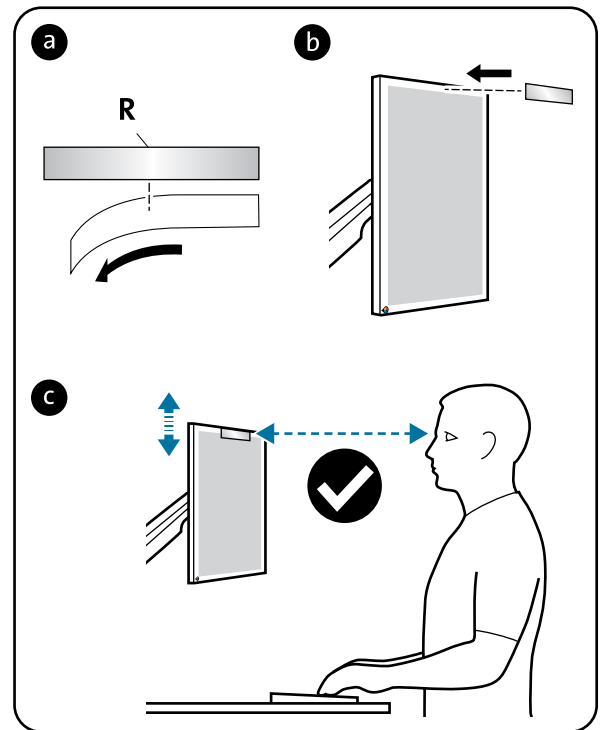
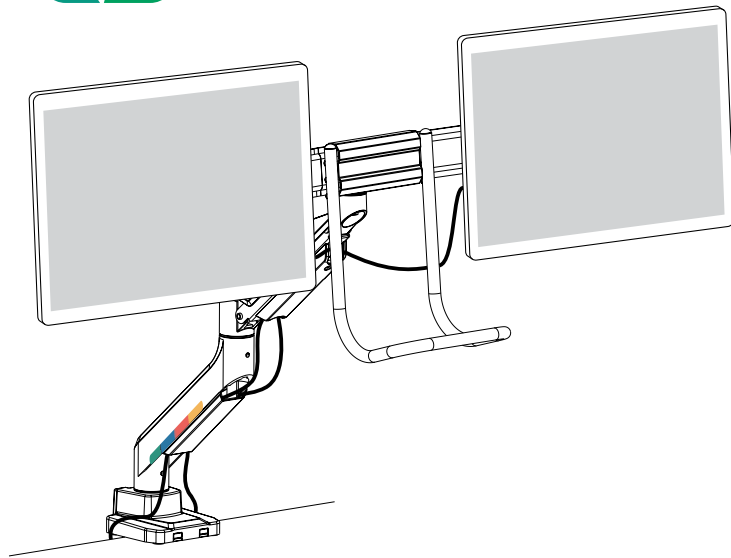
## Find your SmartFit™ size



1. Place your palm on the line



2. Align middle finger

**B****b****C**

[www.kensington.com/support](http://www.kensington.com/support)

Kensington® and SmartFit™ are trademarks of ACCO Brands.

All other registered and unregistered trademarks are the property of their respective owners.

© 2024 Kensington Computer Products Group, a division of ACCO Brands.

Patents: <https://www.accobrand.com/patents/>

