



Kensington The Professionals' Choice™

Wellness, Productivity
& Ergonomic Solutions

Contents

- About Us 03
- What are Musculoskeletal Disorders? 04
- Activate Your Employees’ Health and Wellness 06
- What Are the Benefits of a Healthy, Wellness Focused Workplace? 07
- SmartFit® Explained 08
- When It Comes to Comfort, Fit is Everything 09
- What is your SmartFit® Comfort Color? 10
- Time to Get Your Team Working Well 11
- Stand Up for Yourself 12
- Rise to the Occasion
 - Kensington Monitor Stands 14
 - Kensington Monitor Arms 18
- Put Your Feet Up
 - Kensington Foot Rests 20
- Type at the Right Height
 - Kensington Keyboard Drawers & Platforms 23
- Rest Easy
 - Kensington Mouse Pads & Wrist Rests 26
- Find Your Right Position
 - Kensington Copyholders 30
- We’ve Got Your Back
 - Kensington Back Rests 32
- It’s in the Bag
 - Contour™ Bags 34
- Make Wellness and the Prevention of Workstation Related Injuries Your Business 37
- Non-Traditional Ergonomic Products 38
- Need a Helping Hand? 39



About Us

Since 1981 Kensington has remained focused on creating products that are:

The Professionals' Choice™

We believe that design is everything and we connect and protect technology in a way that looks good, feels good, works well, and makes sense.

As part of our ergonomic and wellbeing product range, we have leveraged our heritage as a highly successful technology brand, committed to innovative, functional products in order to fully integrate technology in to our ergonomic product portfolio.

Wellness and productivity solutions will continue to play a major role in the workspace environment for years to come. At Kensington, we understand that today's consumers are using new technologies, which bring new ergonomic challenges, and we want to address these with ergonomic products. Kensington, uniquely placed within ACCO Brands, offers a total solution, from trackballs, to foot rests and monitor arms, in a way that allows customers to immediately understand the benefits of an Ergonomic approach to work.

Preventing Musculoskeletal Disorders

By enhancing ergonomics within the workspace, the prevention of MSDs reduces the total cost of injuries to businesses, and ensures employee comfort, productivity, and well-being.

Musculoskeletal disorders (MSDs) are injuries or pain in the body's joints, ligaments, muscles, nerves, tendons, and structures that support neck, back and limbs. MSDs are among the most common, preventable injuries within the office workspace.

Musculoskeletal disorders account for nearly half of all absences from work, and a small investment in workspace wellness and ergonomics can not only prevent MSDs before they occur, but it can generate significant rewards in productivity, and well being.

Kensington provides a comprehensive global product portfolio, enhanced by our patented SmartFit® comfort color system, to enable users to prevent MSDs before they happen.

ERGONOMICS = BETTER WELL BEING

64%

Reduction in
Incidence Rate

81%

Decrease in Workers
Compensation Costs

61%

Drop in Work-Related
Musculoskeletal
Disorder (MSD)

88%

Decrease in
Lost Workdays

17%

Increase in
Productivity

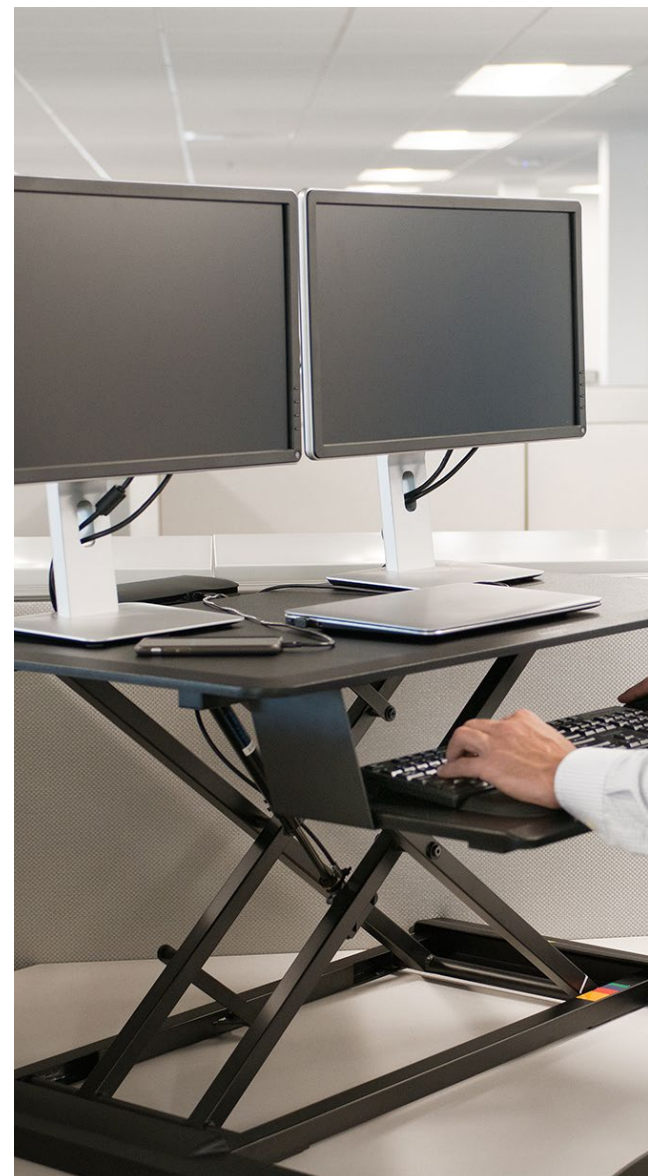
2014 Ergonomics ROI 6 Essentials for Large Employers, Ergoweb



Activate Your Employees' Health and Wellness

Design a workspace to fit in with you and reach new levels of wellness, whatever way you work. There are numerous wellness benefits to working in a healthy ergonomic workplace which is designed to fit and meet your personal needs.

The average person spends 90,000 hours working. On a daily basis this equates to 7 hours per day at their desk, it's therefore really important to take time and manage your well being and take note of any early signs of MSDs.





What Are the Benefits of a Healthy, Wellness Focused Workplace?

At Kensington, we have the opportunity to offer total wellness solution, across a number of categories, in a way that allows customers to immediately understand the benefits of achieving employees' optimal well being while working.

53%

of organizations want to create a culture that promotes health and wellness

..... CURRENTLY

60%

of organizations offer wellness programs





SmartFit® Explained

Complying with ergonomic standards doesn't have to be a pain. The Kensington SmartFit® system eliminates the complication, confusion, and high cost of giving your employees safe, comfortable ergonomic workstations.

Why SmartFit®? Our SmartFit® products are quick and easy to set up. Using our "handy" guide, you can simply adjust your product to your personal comfort color setting.

Our simple color coded system allows users to adjust to the perfect fit in seconds, leaving you time to deal with more important projects.

When It Comes to Comfort, Fit is Everything

The Kensington SmartFit® system enables you to customize your work environment to get maximum comfort from your desktop accessories. All that you need is the SmartFit® hand chart to quickly and accurately set up and adjust a product to your personal comfort setting. If you share a workspace with other users, SmartFit® allows easy and accurate adjustment for each individual, saving both time and money.

DETERMINE YOUR PERSONAL FIT IN 3 EASY STEPS

STEP 1 – MEASURE

With every SmartFit® product, you will receive a hand chart in the box. This hand chart will assist you in finding your specific SmartFit® comfort color to customize your fit.

How do you measure?

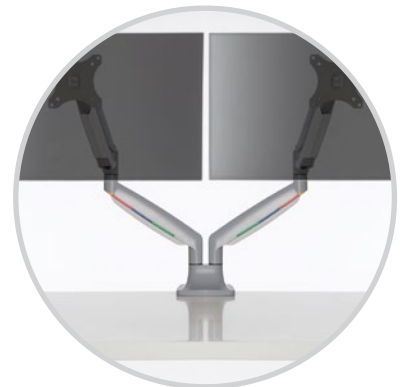
With your right wrist on the baseline of the hand chart, lay your entire hand over the diagram. The tip of your middle finger will point to your SmartFit® color.



STEP 2 – ADJUST

The next step is to adjust the color wheel on your SmartFit® product to your specific color, and you're ready to go.

Not all SmartFit® products have a color wheel, please make sure you read the instructions to understand how to adjust each SmartFit® product.

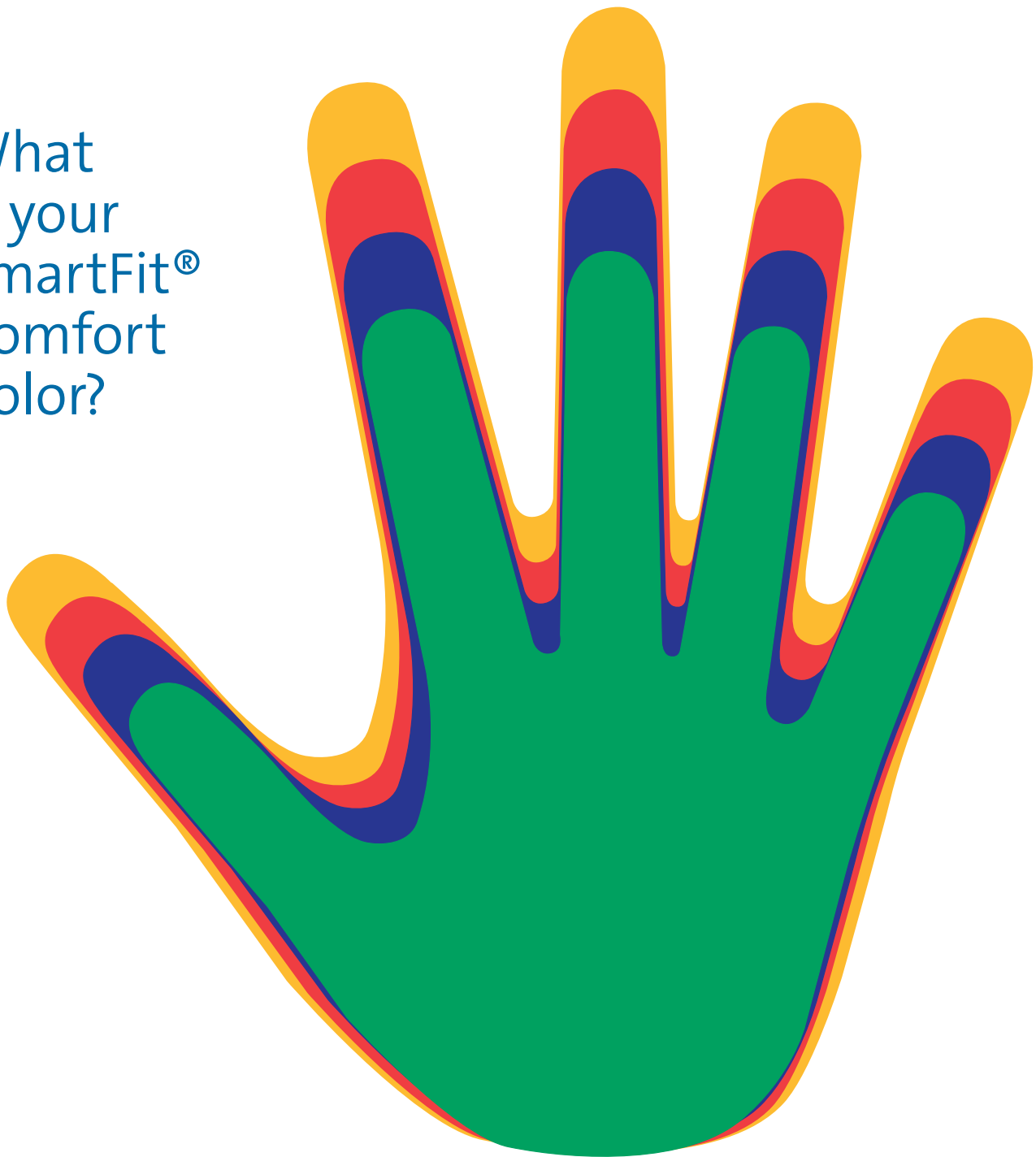


STEP 3 – FIT

The final step is to validate the fit of your SmartFit® product at your workstation. As we make many different SmartFit® products, please refer to the user guide in each product package for specific instructions.



What
is your
SmartFit®
Comfort
Color?



With every SmartFit® product, you will receive a hand chart in the box. This hand chart will assist you in finding your specific SmartFit® color to customize your fit. With your right wrist on the baseline of the hand chart, lay your entire hand over the diagram. The tip of your middle finger will point to your SmartFit® color, and achieve the perfect fit in seconds!

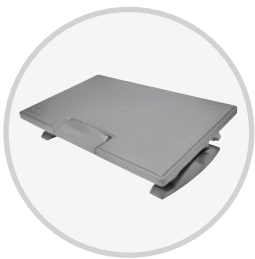
Time to Get Your Team Working Well



DID YOU KNOW?

61% of employees agree that they've made healthier lifestyle choices because of their **company's ergonomic and wellness programs**

—ERGOWEB



Foot Rests



Wrist Rests



Monitor Stands



Back Rests



Keyboard Platforms

Improve employee well-being and productivity



Stand Up for Yourself

A combination of seated and standing can bring the best of both worlds. By mixing standing with sitting through the working day your whole body will feel the benefit. Research suggests that standing desks, which allow you to alter position during the day, can boost energy levels and performance at work. Chances are, you will feel a positive difference in no time at all.

BEST PRACTICE: Setting the height of your sit/stand desk



- Top of Monitor at or just below eye level.
- Monitor at arm's length away.



- Upper arms close to body.
- Keyboard and mouse on same surface.



- Wrists straight and hands at or below elbow level.
- Table height should be at or slightly below elbow height.



- Head, neck, torso and legs are in line.



The benefits of standing as well as sitting are becoming increasingly known, standing is rapidly becoming the new way of working. Many more muscles are engaged and your energy and circulation improves. You can even burn calories as you work.

DID YOU KNOW?

The **number of employees with standing desks** had a great increase over the past five years, **growing more than threefold from 13% in 2013 to 44% in 2017.**



K52804WW

- Fully assembled no installation required
- Professional two-tier structure with 35.4" (89.92cm) wide desk & integrated keyboard desk
- SmartFit® Systems simplifies ideal height positioning
- Pneumatic lift with tension adjustment system easily transitions between sitting & standing positions
- Space-saving design extends straight up & down
- 22" (55.88cm) height extension accommodates taller individuals (>6')



Adjustability is a necessity in today's working environment, and the Kensington Sit/Stand Workstation allows you to convert your traditional office or home desk to a stand-up workstation for greater comfort and productivity. Using a pneumatic lift, the Sit/Stand Workstation allows you to smoothly transition from seated to standing positions. The sturdy, adjustable column-mounted design clamps securely to desks 19.05mm ($\frac{3}{4}$ ") - 63.5mm ($2\frac{1}{2}$ ") to free up desktop space. Simply raise up the Sit/Stand Workstation using the convenient handle, and once standing, use your computer as normal. To return to a seated position, simply reverse the process! The patented SmartFit® swivel arm moves in multiple directions to suit work styles or move the unit out of the way for easy storage.



Rise to the Occasion

Kensington Monitor Stands

Having your screen at eye level is such a better way to work. Our monitor stands help you avoid hunching over while you work at your desk keeping your posture in a neutral position. You also reduce twisting your spine and overextending your neck, which can lead to back and neck problems.



SmartFit® Laptop Riser

K52784WW (with Qi charging pad)
K52783WW (no charging)

- Charges your iPhone 8, 8+ and X
- Qi Inductive Charging technology lets you wirelessly power a compatible phone simply by placing it on the charging pad
- SmartFit® System allows you to find your personal comfort color for optimal ergonomics



Easy Riser® Laptop Cooling Stand with SmartFit® System

K52788WW (black)
K60112US (gray)

- Increases air circulation to keep your laptop cooler
- Padded inserts provide a secure, stable fit and keeps your laptops in place
- Up to 50-degree tilt angle
- Fits most laptops 12" to 17"



Adjustable Laptop Stand with SmartFit® System

K60726WW

- Height adjustable to bring your laptop screen to eye level, reducing eye and neck strain
- Slim, metal design offers solid support while using minimal desk space
- Built-in cable management reduces clutter and keeps your connections close at hand





LiftOff™ Portable Laptop Cooling Stand

K60149A

- Portable laptop cooling stand helps keep your laptop running cooler, longer
- Stand lifts the laptop off its surface, promoting air circulation and reducing heat buildup
- Adjustable tilt and height let you position the screen to reduce neck and eye strain



Flat Panel Monitor Stand with SmartFit® System

K60046US

- Strong enough to support flat panel up to 35 lbs. and 21"
- Height and twin side shelves adjust to customize workspace
- SmartFit® system lets you easily adjust monitor height to your personal requirement



Spin2™ Monitor Stand with SmartFit® System

K52787WW (black)
K60049USAF (gray)

- Places monitor at comfortable, eye-level to ease neck strain
- Patented multi-compartment carousel organizes desktop tools for easy access
- Sturdy design holds flat panel monitors up to 40 lbs



BEST PRACTICE: Monitors

- The optimum viewing distance between your face and the monitor is about 1 arm's length or 25-75 cm / 12 – 30 in.
- Ensure that your monitor is able to tilt and swivel
- The top of the viewable area of the display should be at your eye level and the screen should be angled upward towards you
- The image on screen should be flicker free and free from glare and reflections



Rise to the Occasion



Monitor Stand with SmartFit® System

K52786WW (black)
K60089 (gray)
K52785WW (small, black)
K60087F (small, gray)

- SmartFit® system lets you adjust monitor height to your personal requirements
- Determine your SmartFit® comfort color, then set monitor height to match by snapping one or two risers into place to reduce eye and neck strain



Extra Wide Monitor Stand with SmartFit® System

K52797WW

- SmartFit® System lets you adjust monitor height to your personal comfort color, by snapping risers into place
- 3 height settings
- Stand positions monitor in line with your eyes to help reduce eye and neck strain
- Extra-wide universal platform design fits any monitor up to 27" and 18kg



SmartFit® Extra Wide Monitor Stand with Drawer

K55725WW

- Ergonomic Design promotes a healthy posture and optimizes comfort for the eyes, neck and shoulders by elevating the monitor to an optimal viewing height.
- Adjustable Height provides 3 positions to optimize comfort.
- SmartFit® System simplifies ideal ergonomic height positioning using scientifically proven research to support proper fit and increase productivity.



SmartFit® Easy Riser® Go Adjustable Ergonomic Laptop Riser and Cooling Stand

K50422WW (black)
K50420WW (cool gray)
K50423WW (small, black)
K50421WW (small, cool gray)

- SmartFit® System simplifies ideal ergonomic height positioning using scientifically proven research to support proper fit and individualized comfort.
- Height Adjustable Height Adjustable to allow users to raise the laptop up to 34% higher than most risers of similar structure for optimal eye alignment.
- Foldable Dual Kickstand Structure provides additional viewing and height flexibility options within a space-saving desktop footprint.





CoolView™ Wellness Monitor Stand with Desk Fan

K55855WW

- Ergonomic Design promotes a healthy posture and optimizes comfort for the neck and shoulders by elevating the monitor to an optimal viewing height
- Dual-Fan Airflow System provides a gentle natural airflow with 2-speeds, optimal indirect blowing angles and low noise (<37dBA) – ideal for energy-efficient cool air circulation in your workspace
- Steel Base offers stylish and durable support (max load: 200 lbs).



FreshView™ Wellness Monitor Stand with Air Purifier

K55460WW

K55462WW (Standalone Desktop Air Purifier)
K55463WW (Filter replacement kit 2-pack)

- Ergonomic Design promotes a healthy posture and optimizes comfort for the neck and shoulders by elevating the monitor to an optimal viewing height
- Steel Base offers stylish and durable support for monitors and all-in-one PC's up to 27" (max load: 90.7kg or 200lbs)
- 3-in-1 Air Purification System is ozone-free and uses a pre-filter and a HEPA 11 filter with activated carbon to remove 95% of common pollutants, including PM2.5, dust, particles, and VOC odors and gases caused by smoking, new construction, new furniture, pets and cooking (lasts up to 2000 hours)
- Built-in cable management reduces clutter and keeps your connections close at hand



WarmView™ Wellness Monitor Stand with Heater

K55464NA

K55465NA (WarmView Personal Heater –TBC)

- Ergonomic Design promotes a healthy posture and optimizes comfort for the neck and shoulders by elevating the monitor to an optimal viewing height.
- Solid Steel Base offers stylish and durable support for monitors and all-in-one PC's up to 27" (max load: 200lbs).
- 250W Ceramic Heater provides quiet (35/45 dBA), energy-efficient, fan-powered warmth with high/low settings for personal office spaces.
- Adjustable tilt and height let you position the screen to reduce neck and eye strain





Rise to the Occasion

Kensington Monitor Arms

Kensington SmartFit® monitor arms work with any monitor to allow perfect positioning, for a safe, comfortable and ergonomic workspace. Our exclusive color coded SmartFit® system places the monitor at the ideal ergonomic height, reducing eye and neck strain so that employees get more done, more comfortably. SmartFit® monitor arms are lightweight, require little or no assembly, and can be set up by just one person. The SmartFit® color bar re-adjusts in seconds, meaning that multiple users of the same workspace can adjust for their own perfect fit—without the help of the IT manager.



SmartFit® One-Touch Height Adjustable Single Monitor Arm

K55470

- SmartFit® System simplifies ideal ergonomic height positioning using scientifically proven research to support proper fit
- One-Touch Adjustable Arms with Built-in Gas Spring simplifies height adjustment, provides 180° swivel and monitor rotation, +/- 90° tilt adjustment, and allows monitors to smoothly move up, down, forward and back for full motion articulation
- Stability Focused Design supports 13"-32" flat or curved monitors weighing up to 19.8lbs (9kg) and ensures monitors are stable and steady in any position



 **SmartFit® Dual Monitor Arm Mount**

K60273WW

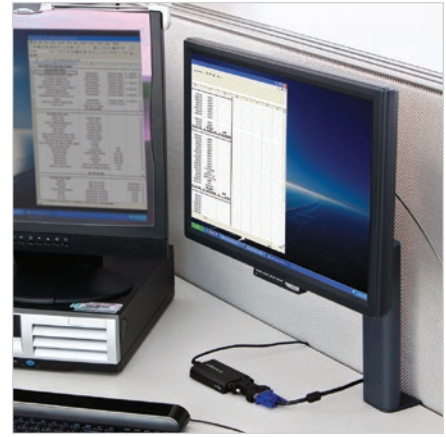
- SmartFit® System allows you to find your personal comfort color within 4 height regions for optimal ergonomics
- Monitors attach via 75mm or 100mm VESA-compatible mounts
- Cable management system helps neatly route cords for a clutter-free desktop



 **Column Mount Extended Monitor Arm with SmartFit® System**

K60904USF

- Improves ergonomics for reduced eye and neck strain
- Effortless adjustment vertically, horizontally, and even distance from user
- SmartFit® system lets you easily adjust monitor height to your personal requirement



 **Column Mount Monitor Arm with SmartFit® System**

K60903USF

- Improves ergonomics for reduced eye and neck strain
- Adjusts effortlessly for ideal ergonomics
- Cable management system reduces desktop clutter



 **SmartFit® One-Touch Height Adjustable Dual Monitor Arm**

K55471

- SmartFit® System simplifies ideal ergonomic height positioning using scientifically proven research to support proper fit
- One-Touch Adjustable Arms with Built-in Gas Spring simplifies height adjustment, provides 180° swivel and monitor rotation, +/- 90° tilt adjustment, and allows monitors to smoothly move up, down, forward and back for full motion articulation
- Stability Focused Design supports 13"-32" flat or curved monitors weighing up to 19.8lbs (9kg) and ensures monitors are stable and steady in any position



Flat Panel Desk Mount Monitor Arm

K60106

- Save space by suspending flat panel monitor above desk
- Arm extends, rotates, tilts and swaps monitor from landscape to portrait orientation
- Three height levels for individual viewing comfort
- Clamp-style mount fits most desks from 1" to 4" thick

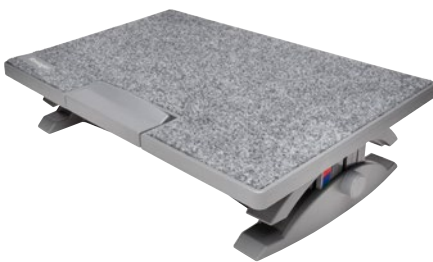


Put Your Feet Up

Kensington Foot Rests

Kensington foot rests keep legs elevated for improved posture and circulation while you work at a desk and help reduce pressure on the lower back. They are easily adjustable for extra comfort, while there is a range of specifications available to suit individual requirements. Kensington foot rests are lightweight, require little or no assembly, and are perfect for either your personal workspace, or can be easily adjusted to fit those working in a hot-desk environment.

Kensington has the solution to help you feel better and achieve overall wellness every day you go to work. With our full line of ergonomic solutions for your feet, back and seat, you're more likely to feel better and less likely to suffer a repetitive-stress injury or have to visit a doctor.



SmartFit® SoleMate™ Pro Elite Ergonomic Foot Rest

K50345WW

- Ergonomist approved to improve posture, promote healthy circulation and support back and leg comfort
- Height adjustable with positions between 3.5" and 5" to support users of all heights
- Locking foot pedal control allows users to adjust the foot rest without leaving their chair
- Easy-to-clean fabric surface can be spot cleaned with warm water



SmartFit® Pro SoleMate™ Pro Ergonomic Foot Rest

K50409WW

- Ergonomist approved to improve posture, promote healthy circulation and support back and leg comfort
- Height adjustable with positions between 3.5" and 5" to support users of all heights
- Locking foot pedal control allows users to adjust the foot rest without leaving their chair
- Wide platform comfortably accommodates users preferring a wider stance



SmartFit® SoleMate™ Foot Rest

K50416WW

- Ergonomist approved to improve posture, promote healthy circulation and support back and leg comfort
- Height adjustable with positions between 3.5" and 5" to support users of all heights
- Wide platform comfortably accommodates users preferring a wider stance



BEST PRACTICE: Foot Rests

- Keep the area under your desk free from clutter at all times
- Ensure that there is space under your desk to move your feet and legs freely
- Place your feet on a foot rest to relieve the pull on your lower back
- When a foot rest is properly positioned, you should feel light pressure under the front of the thighs
- Foot rests should be movable, but heavy enough to stay in place when feet are resting on it front of the thighs
- Ensure that the foot rest is wide and long enough to allow you to change the position of your feet from time to time



SmartFit® SoleMate™ Plus Foot Rest — Black

K52789WW

- SmartFit® System lets you adjust foot rest to your personal comfort color using foot pedal
- Promotes a stress-reducing seating position to support your feet, legs and lower back
- Height adjusts from 3.5" to 5", angle adjusts up to 30° for individual comfort



SoleMate™ Plus with SmartFit® System

K56146USF

- Convenient foot pedal control lets you adjust the footrest without leaving your chair
- Height adjusts from 3.5" to 5", angle adjusts up to 30° for individual comfort
- Large, non-skid foot surface provides added control



SoleMate® Comfort Foot Rest SmartFit® System

K56144USF

- Foot rest with luxurious memory foam soothes tired legs and feet
- Convenient foot pedal control lets you adjust the footrest without leaving your chair
- Height adjusts from 3.5" to 5", angle adjusts up to 30° for individual comfort



Put Your Feet Up



“Sitting all day is hard on the body and can put some people at risk for blood clots in the lower legs. Movement can help circulatory problems in your feet and legs, it also increases your energy levels and improved productivity.”

—ERGOPRISE



SoleMassage Exercising Foot Rest

K56155US

- Pamper your tired feet with the stimulating surface bumps
- Invigorate your ankles and legs with the exercising motion
- Optimize your comfort with five height-adjustable settings and a tilt of 30 degrees
- Special heel stops keep your feet from slipping off



SoleMassage Exercising Foot Rest

K56152US

- Keeps legs elevated for improved posture and circulation while working at your desk
- Offers choice of three height and three tilt adjustments for individual comfort
- Large non-skid foot surface enhances overall stability
- Helps reduce pressure on lower back and alleviate discomfort from sitting



Anti-Fatigue Mat

K55401WW

- Ergonomically Engineered to stimulate blood circulation and reduce fatigue on legs, back and feet by providing better pressure distribution
- Patented Rubberized-Gel Foam is 17mm thick and provides superior performance over thicker polyurethane foam competitors, offering unmatched tensile strength, an easy-to-clean waterproof and oil-resistant surface, and enhanced shock absorption
- NFSI Certified Anti-Slip Surface reduces slipping concerns and ensures mat stays in place



Type at the Right Height

Kensington Keyboard Drawers & Platforms

Keyboard platforms and drawers from Kensington allow you to lower your shoulders to prevent hunching, overextending joints and compressing nerves.

Not only does a keyboard drawer help keep your desktop less cluttered, it also promotes a better typing angle on the keyboard so you can set your wrists at the correct angle and relieve pressure that can lead to repetitive-stress injuries.



Under-desk Basic Keyboard Drawer

K60009US

- Durable easy-glide drawer frees up workspace by mounting under the desk.
- Can be mounted 2" to 3" below desk for individual comfort.



Standard Over-desk Keyboard Drawer

K60082USF

- Lifts monitor and stores keyboard underneath the shelf on the desktop
- Slide-out drawer glides to easily access and store keyboard
- Sturdy platform supports monitors up to 21" and 60 lbs.



Underdesk Adjustable Keyboard Platform

K60067

- Unique modular platforms attach to arm as needed for different size keyboarding surfaces
- Use all three platforms for a large mousing area or remove a platform to fit small desks
- Adjusts 6" in height, +/- 15 degrees in tilt and rotates 360 degrees



Type at the Right Height



Modular Platform with SmartFit® System

K60718USF

- Use all three platforms for a large mousing area or remove a platform to fit small desks
- Adjusts 6" in height, +/- 15 degrees in tilt
- Includes a keyboard wrist rest



Underdesk Comfort Keyboard Drawer with SmartFit® System

K60004US

- Extra-wide 26" tray with integrated mousing area fits all keyboards
- Keyboard and mouse cable management keeps cords out of the way
- Includes wrist rests and mouse pad



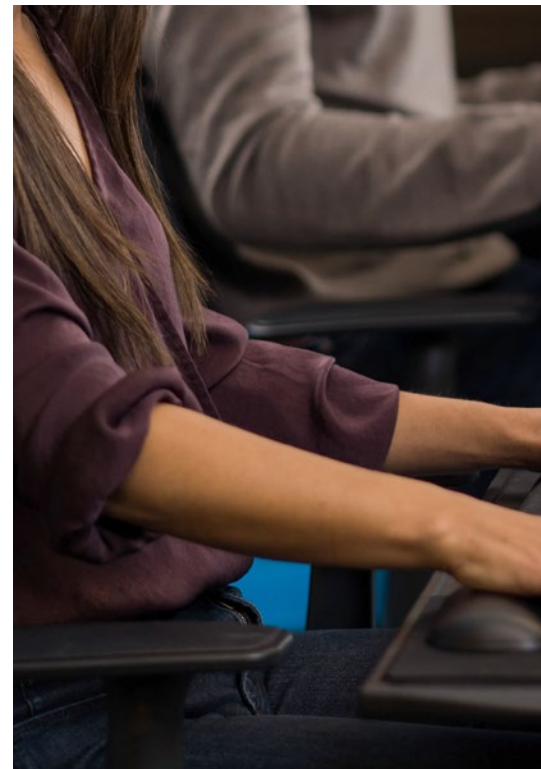
Desktop Comfort Keyboard Drawer with SmartFit® System

K60006US

- Shelf raises monitor for improved position with keyboard and mouse storage
- Extra-wide tray with room for oversized keyboards and integrated mousing area
- Full-length wrist pad provides all-day comfort and support for typing and mousing

BEST PRACTICE: Keyboard Drawers and Platforms

- Position your mouse within easy reach to prevent over-extending your arm
- Sit upright and close to the desk so your mouse arm is not stretched
- Support for wrists and forearms reduces
- Rest your fingers lightly on the buttons and do not press them hard
- Support the load on the upper limbs and shoulders
- Avoid unnecessary extension and flex of the wrist





Over/Under Keyboard Drawer with SmartFit® System

K60717USF

- Adjusts both keyboard and monitor height to match your SmartFit® personal comfort color
- Works over or under desk, according to desk type and SmartFit® guidelines



SmartFit® Sit/Stand Desk

K52804WW

- Extra-wide 26" tray with integrated mousing area fits all keyboards
- Keyboard and mouse cable management keeps cords out of the way
- Includes wrist rests and mouse pad



SmartFit® Sit/Stand Dual Monitor Workstation

K52796WW

K55792WW (single monitor)

- SmartFit® System allows you to measure, adjust and fit the workstation's articulating arm to your ideal comfort color setting
- Adjustable dual mounts allows you to slide the monitors left and right along both sides of the arm for a better fit
- Pneumatic lift lets you quickly and easily transition from sitting to standing
- Articulating arm has four pivot points so you can easily move the workstation up and down and side to side
- Height adjustable so you can set the monitors and the keyboard platform independently for the ideal viewing and typing settings
- Cable management channel routes accessory cords to keep workstation uncluttered
- Reinforced mounting clamp attaches quickly to the desktop
- Secondary platform provides a space-saving area for additional accessories
- Compatible with monitors up to 24" (Max weight of 22.5 lbs. for monitors and items on platforms)





Rest Easy

Kensington Mouse Pads & Wrist Rests

Whether a wrist rest or mouse pad, Kensington comfort products relieve pressure while also helping to put the body in the proper ergonomic position. Like all Kensington products, many of our mouse pads and wrist rests are user adjustable, so that multiple users can adjust the height and comfortably share a workspace in a hot-desk environment.



SmartFit® Mouse Pad

K55793AM

- Height adjustable inserts are set to your color and help set your wrist at the correct angle for comfortable clicking and scrolling
- Gel wrist pad provides a cool, comfortable surface that conforms to your wrist and relieves pressure points

SmartFit® Conform Wrist Rest

K55787US

- Ergonomic wrist rest relieves pressure and keeps arm at neutral angle
- Conform padding provides support while nonstick pads on base allows wrist rest to move with mouse for more comfortable use and continuous alignment
- SmartFit® personalized color coding system makes it easy to select the best support for your wrist

ErgoSoft™ Wrist Rest Mouse Pad

K50437WW (gray)

K55888WW (black)

- Pro-Comfort support features faux leather exterior with gel-cushioned interior
- Ergonomist approved for optimal health comfort & protection
- Contoured shape for perfect fit & support
- Easy-to-clean surface wipes clean with damp cloth



Duo Gel Mouse Pad Wrist Rest

K62401AM (blue)
K62402AM (red)

- Gel pillow matches natural curve of wrist and hand for comfortable scrolling and clicking
- Ventilation channel helps keep hands cool and dry
- Duo-tone color combination



Duo Gel Keyboard Wrist Rest

K62397AM (blue)
K62398AM (red)

- Gel pillow matches natural curve of wrist and hand for comfortable typing
- Ventilation channel helps keep hands cool and dry
- Duo-tone color combination



Optics-Enhancing Mouse Pad

L56001C

- Specially designed surface improves wrist movement
- Non-reflective cloth prevents desktop wear and keeps mouse mechanism clean for improved optical tracking accuracy
- Non-skid base keeps mouse pad in place



ErgoSoft™ Wrist Rest for Mouse

K52802WW (black)
K52803WW (slim mouse/trackpad, black)
K50432 (gray)
K50436 (slim mouse/trackpad, gray)

- Pro-Comfort support features faux leather exterior with gel-cushioned interior
- Ergonomist approved for optimal health comfort & protection
- Contoured shape for perfect fit & support
- Easy-to-clean surface wipes clean with damp cloth



ErgoSoft™ Wrist Rest for Keyboards

K52799WW (black)
K52798WW (mechanical/gaming, black)
K50433 (gray)
K50431 (mechanical/gaming, gray)

- Pro-Comfort support features faux leather exterior with gel-cushioned interior
- Ergonomist approved for optimal health comfort & protection
- Contoured shape for perfect fit & support
- Easy-to-clean surface wipes clean with damp cloth



ErgoSoft™ Wrist Rest for Slim Keyboards

K52800WW (black)
K52801WW (slim, compact, black)
K50434 (gray)
K50435 (slim, compact, gray)

- Pro-Comfort support features faux leather exterior with gel-cushioned interior
- Ergonomist approved for optimal health comfort & protection
- Contoured shape for perfect fit & support
- Easy-to-clean surface wipes clean with damp cloth



Memory Foam Mouse Wrist Pillow®

K62816USF (black)
K62817USF (blue)

- Memory foam (viscoelastic) provides maximum support to help relieve wrist discomfort
- Rigid non-skid base keeps wrist rest firmly in place
- Lycra cover repels sweat and dirt to stay soft
- Non-glossy mousing platform for superior optical mouse performance



Memory Foam Keyboard Wrist Pillow®

K62813USF

- Memory foam (viscoelastic) provides maximum support to help relieve wrist discomfort
- Rigid non-skid base keeps wrist rest firmly in place
- Lycra cover repels sweat and dirt to stay soft
- Wide enough to provide comfortable support for keyboard and numeric pad



Memory Foam Wrist Pillow® Platform

K62819US

- Combined keyboard support and platform saves space and boosts stability
- Temperature- and pressure-sensitive foam molds to the body's contours
- Sturdy platform bridges corners or extends the desk edge
- Non-skid base keeps wrist rest firmly in place

BEST PRACTICE: Mouse Pads & Wrist Rests

- Move the keyboard out of the way if it is not being used
- The mouse should be placed as close to the wrist as possible
- Wrists should be straight when using a keyboard, with elbows vertical under the shoulder
- Don't grip your mouse too tightly





Wrist Pillow® Mouse Wrist Rest

L57822US (black)
L57803USF (blue)

- Pillow foam for soft, durable support
- Non-skid base keeps wrist rest firmly in place
- Rest provides comfortable support that's large enough for any mouse or trackball
- Large surface eliminates pressure points to improve comfort



Wrist Pillow® Keyboard Wrist Rest

L22801US (black)
L22803US (blue)

- Pillow foam for soft, durable support
- Non-skid base keeps wrist rest firmly in place
- Provides comfortable support that's wide enough for any keyboard and numeric pad
- Wide support works with all keyboard widths and styles



Wrist Pillow® Extended Platform

L36822US

- Platform design effectively extends desk for comfortable wrist support
- All-in-one wrist pad and keyboard platform is stable yet easy to reposition
- Super-soft cushion and support layer comfortably distribute pressure
- Non-skid platform holds keyboard in place



Find Your Right Position

Kensington Copyholders

A computer display isn't the only thing that needs to be properly positioned. Printed materials need to be in the proper line of sight as well. Kensington copyholders attach to the monitor, keyboard or desk to position material at the correct height and angle to reduce fatiguing head and eye movement and increase employee comfort and productivity.



InSight® InLine Copyholder with SmartFit® System

K62097F

- SmartFit® comfort color system lets you quickly and easily set your optimal viewing angle
- Copyholder places books and documents in line with the keyboard and monitor, eliminating the need to turn your head as you type
- Four different configurations fit different workspaces – on the desktop or with underdesk keyboard platform

FlexClip™ Copyholder

K62081BF

- Easily attaches to laptop screen or flat panel monitors
- Easy-to-position gooseneck supports most comfortable viewing position
- Sturdy clip securely holds documents in portrait or landscape position

Metal Letter Size Copyholder

S7062046B

- Adjustable easel stand folds flat for space-saving storage
- Clear line guide can be positioned on sides or top of document
- Rubber feet stay put and protect work surface

DeskMate Multi-Function Copy Holder

K55910WW

- Multiple desk items in one saves space, while keeping you organized and comfortable.
- The sturdy dual page orientation copyholder, clipboard, and bookstand has a strong clip that secures up to 50 sheets in portrait or landscape orientation, keeping printed materials comfortably elevated.
- The magnetic dry-erase whiteboard makes it easy to write or attach notes, ideas, messages.



InSight® Priority Puck

K62061

- Organizes desktop space by getting documents off the desktop
- The only desktop copyholder with five slots to prioritize daily tasks
- Positions documents in a more comfortable position to reduce eye and neck strain



InSight® Adjustable Book and Copyholder

K62058US

- Firm grip copy clip holds up to 50 multi-size pages
- Adjustable design can accommodate landscape or portrait formats in paper or books
- Fits nicely between the keyboard and monitor for comfortable, ergonomic viewing



InSight® Graphite Desktop Copyholder

K62411US

- Positions documents in a more comfortable position to reduce eye and neck strain
- Holds up to 50 pages
- Magnified line guide keeps eyes on-track
- Four angle settings for flexibility



We've Got Your Back

Kensington Back Rests

Kensington back rests help to reduce back strain while you work at a desk, providing comfort and support for your spine and improving posture. Easily adjustable to fit almost any chair, these are perfect for either your personal office workspace, or for those that are hot-desking, we offer easily adjustable back rests.



Ergonomic Memory Foam Seat Cushion

K55805WW

- Ergonomic design promotes healthy posture and provides back support
- Premium high density memory foam provides professional structural support that maintains shape
- Anti-slip backing prevents sliding using high-quality silicone friction grip



Premium Cool-Get Seat Cushion

K55807WW

- Cooling Fabric with Cool-Gel Core provides a Q-max certified decrease in body temperature for maximum comfort during extended periods of sitting
- Ergonomic design promotes healthy posture and maximizes comfort
- Zero tailbone pressure minimizes contact between tailbone and seat cushion



Memory Foam Back Rest and Seat Rest

L82025F (back rest)

L82024F (seat rest)

- High-density memory foam provides maximum support to help relieve back discomfort
- Temperature – and pressure – sensitive foam molds to the body's contours
- Originally developed by NASA to relieve pressure on astronauts during liftoff



HalfBack® Pad

L82021B

- Molded Memory foam backrest encourages comfortable, correct posture
- Universal design easily fits virtually all office chairs
- Durable and washable stretch Lycra slip cover is soft and comfortable on the back

BEST PRACTICE: Back Rests

- The back rest of your chair should not give and lean back separately from the seat of the chair
- If you do wish to lean back and relax, the seat and back rest should lean back together from a joint beneath your seat
- Ensure that the back rest on your chair supports your lower back while at your desk
- Make sure that you relax while maintaining the correct posture



SmartFit® Conform Back Rest

K60412WW

- Independent springs conform to fit your body shape and articulate with your posture
- SmartFit® System lets you measure, adjust and fit the mouse pad to your ideal comfort colorsetting
- Height adjustable for customized lumbar support





It's in the Bag

Kensington Contour™ Bags

We took a premium, durable range of computer carrying cases and sent them to a group of ergonomists. They looked at how the case was used, so that they could think from the bottom-up about how to make the perfect bag, to truly support you while you're on the move. Our Contour bag range is ergonomically designed to enhance your comfort.



Contour™ 2.0 Laptop Briefcase

K60387WW (Pro 17")
K60386WW (Business 15.6")
K60388WW (Executive 14")

- Contoured panel hugs the body and shifts weight closer to the center of gravity* while specially positioned pockets help evenly distribute weight and balance contents.
- Adds another comfortable option to how it can be carried.
- Secures your laptop or tablet from intrusion.



Contour™ 2.0 Pro Laptop Backpack

K60381WW (Pro 17")
K60382WW (Business 15.6")
K60383WW (Executive 14")

- Heat-dissipating contoured back hugs the body and shifts weight so it's closer to the center of gravity*, while specially positioned pockets help evenly distribute weight and balance contents.
- Adds another comfortable option to how it can be carried.
- Secures your laptop or tablet from intrusion.



Contour™ Backpack 15.6"

K62238B

- Contour adjustable lumbar support panel reduces fatigue by shifting weight onto the hips
- Padded, contoured shoulder straps ease neck and shoulder strain
- Flap-free access to quickly reach computer and contents; convenient front pocket organizes key items at your fingertips



Contour™ Pro Carrying Case 17"

K62340D

- SnugFit™ computer protection compartment wraps padded protection around laptop and suspends it from the bottom of the case, providing protection against bumps and drops
- Body-hugging contour panel helps reduce shoulder muscle fatigue by 35%

Contour™ Pro Carrying Case 15.6"

K62220F

- SnugFit™ computer protection compartment wraps padded protection around laptop and suspends it from the bottom of the case, providing protection against bumps and drops
- Body-hugging contour panel helps reduce shoulder muscle fatigue by 35%

Contour™ Balance Laptop Roller 15.4"

K62533USA

- Contour telescoping handle is ergonomically designed to shift weight to the wheels, minimizing strain on the arm and increasing rolling ease
- Up to 25% lighter than most traditional rollers, makes placement in aircraft overhead compartments easier





It's in the Bag



Contour™ Overnight Laptop Roller 15.4"

K62903A

- Flexible overnight compartment adapts to maximize usable space for clothing and files
- Zippered interior compartment holds enough clothes for overnight
- 3-stage telescoping handle to adjust to your height



Contour™ Roller 17"

K62348A

- Five-stage telescoping handle to adjust to your height
- When carrying, contour panel and weight distribution system reduce shoulder fatigue by 35%



Triple Trek™ Ultrabook™ Optimized Backpack 15.5"

K62591AM

- Fleece-lined compartments for tablet, smartphone, and Ultrabook keep devices organized and protected against scratches
- Handy grab handle doubles as a trolley strap
- Reflective zippers for visibility at night



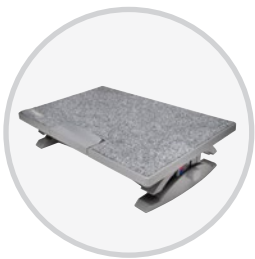
Make Wellness and the Prevention of Workstation Related Injuries Your Business



DID YOU KNOW?

The cost of poor ergonomics is approximately **\$1 million per year** for companies with 1,000 employees or more.

—ERGOWEB



Foot Rests



Wrist Rests



Monitor Stands



Back Rests



Keyboard Platforms

Improve employee well-being and productivity



Non-Traditional Ergonomic Products

Most of us spend long hours at our desk using a mouse and a keyboard. Regular users are susceptible to long term injuries such as Repetitive Strain Injury (RSI) and Carpal Tunnel Syndrome (CTS). At Kensington, we not only support with traditional ergonomic products, but we also provide a comprehensive range of ergonomic mice, trackballs and keyboards designed to reduce risk of injury, while increasing comfort and productivity in your workspace.



Expert Mouse® Wireless Trackball

K72359WW

- Wireless connection via Bluetooth 4.0 LE or USB nano receiver
- TrackballWorks™ lets you customize all 4 buttons, set cursor speed
- DiamondEye™ optical tracking technology for premium cursor control and accuracy

**TrackballWorks™ compatible with Mac only when using 2.4GHz connection*



SlimBlade™ Trackball

K72327US

- Slim, low-profile shape for hours of comfortable use
- Dual lasers plus large ball for precision and scrolling that's all in the ball
- Adjust pointer speed, scrolling and button functions with TrackballWorks for a personalized experience



Expert Mouse® Wired Trackball

K64325

- Optical tracking for superior accuracy
- Award-winning scroll ring for precise fingertip scrolling
- Exceptional comfort for ultimate productivity



Orbit® Trackball with Scroll Ring

K72337US

- All-day comfort from a world leader in trackball innovation
- Scroll ring allows fast, easy scrolling of web pages and documents
- Uses far less desk space than a mouse



Orbit® Wireless Mobile Trackball

K72352US

- Works wherever you do, with no cables to tie you down
- A distinctive centered ball design gives you more comfort and precision
- Unique touch scroll ring lets you glide effortlessly through web pages and documents



Orbit® Optical Trackball

K64327F

- All-day comfort from a world leader in trackball innovation
- Uses far less desk space than a mouse
- Optical technology delivers superior precision – no cleaning required



Need a Helping Hand?

Haven't found what you were looking for? Need more advice?

Our ergonomics sales support team is dedicated to helping businesses select the right product solutions. They will be happy to help you with any ergonomics-related questions, or respond to a special pricing request for large orders.

Kensington®

FOR MORE INFORMATION CONTACT:
1.855.692.0054
sales@kensington.com



Kensington The Professionals' Choice™

The more you take care of business, the more we take care of you.

FOR MORE INFORMATION CONTACT:

1.855.692.0054 • sales@kensington.com



Kensington, Orbit, Easy Riser, Expert Mouse, HalfBack, Insight, SmartFit, Wrist Pillow, and ACCO are registered trademarks of ACCO Brands. Contour, ErgoSoft, FlexClip, SlimBlade, Spin 2, TripleTrek and Kensington The Professionals' Choice are trademarks of ACCO Brands. All other registered and unregistered trademarks are the property of their respective owners. © 2019 Kensington Computer Products Group, a division of ACCO Brands. K19_3254 - 080520