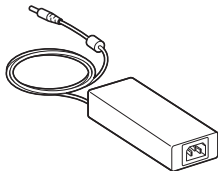
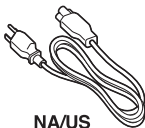
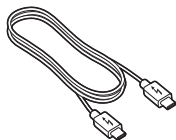
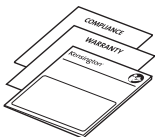
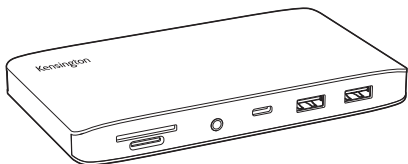


Kensington®

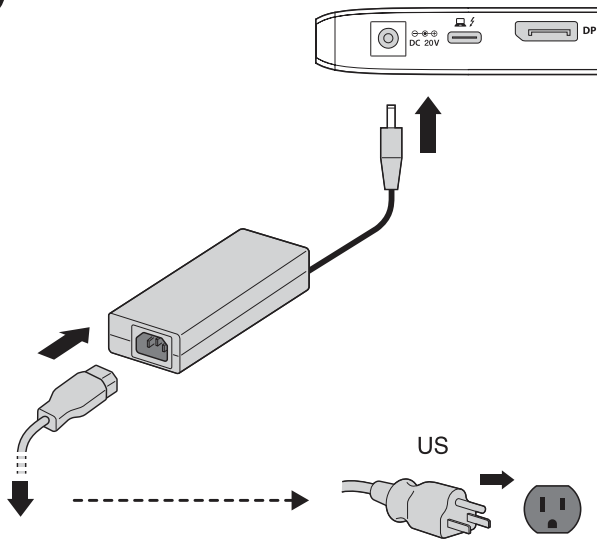


SD2480T Thunderbolt™ 3 and USB-C Dual 4K Hybrid Nano Dock

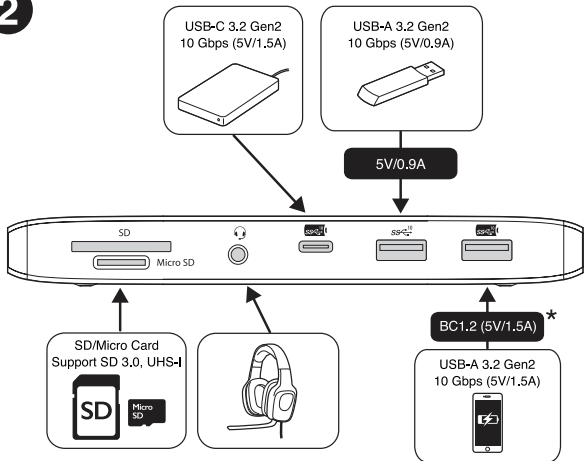


[kensington.com/register](https://www.kensington.com/register)

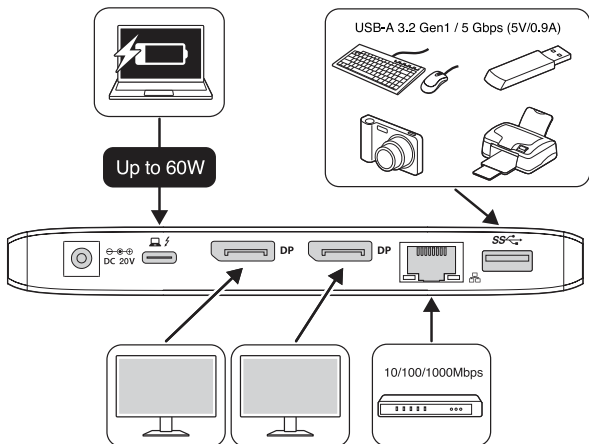
1

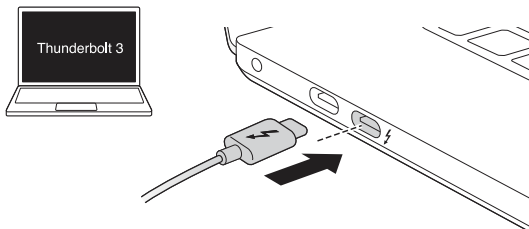
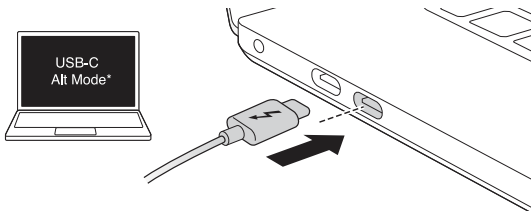


2

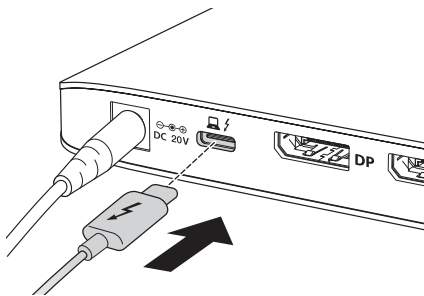


* USB Battery Charging 1.2-compliant devices

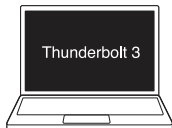







3**a****b**

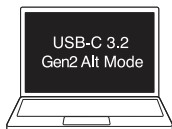
*USB-C laptop must support DisplayPort Alt Mode and Power Delivery








4

5



1X 	2X  
 DP	 DP
8K @30Hz	3840*2160 @60Hz



	1X 	2X  
	 DP	  DP DP
HBR2 (DP-1.2)	3840*2160 @30Hz	1920*1080 @60Hz
HBR3 (DP-1.4)	3840*2160 @60Hz	3840*2160 @30Hz

6 Initial Thunderbolt 3 connection for Windows

New Thunderbolt™ device have been attached

Thunderbolt™ devices were attached. In order to approve them for use this application must be run with administrator privileges.

Click OK to run the **Thunderbolt™** software with administrator privileges.

OK

Cancel

6.1 Manage Thunderbolt 3 devices and settings later



6.2

View Attached Devices
Approve Attached Devices ›
Manage Approved Device

Settings
Exit



For support, visit [kensington.com/support](https://www.kensington.com/support)
Register your dock at [kensington.com/register](https://www.kensington.com/register)