

## CUSTOMER SERVICE

For warranty details or support with your authentic PowerA accessories, please visit

**[PowerA.com/Warranty-Policy](https://www.powera.com/Warranty-Policy)** or

**[PowerA.com/Product-Support](https://www.powera.com/Product-Support)**

# POWERA™ WIRED STEREO HEADSET for Nintendo Switch™ 2

## USER MANUAL

MODEL: UNHSHSWD

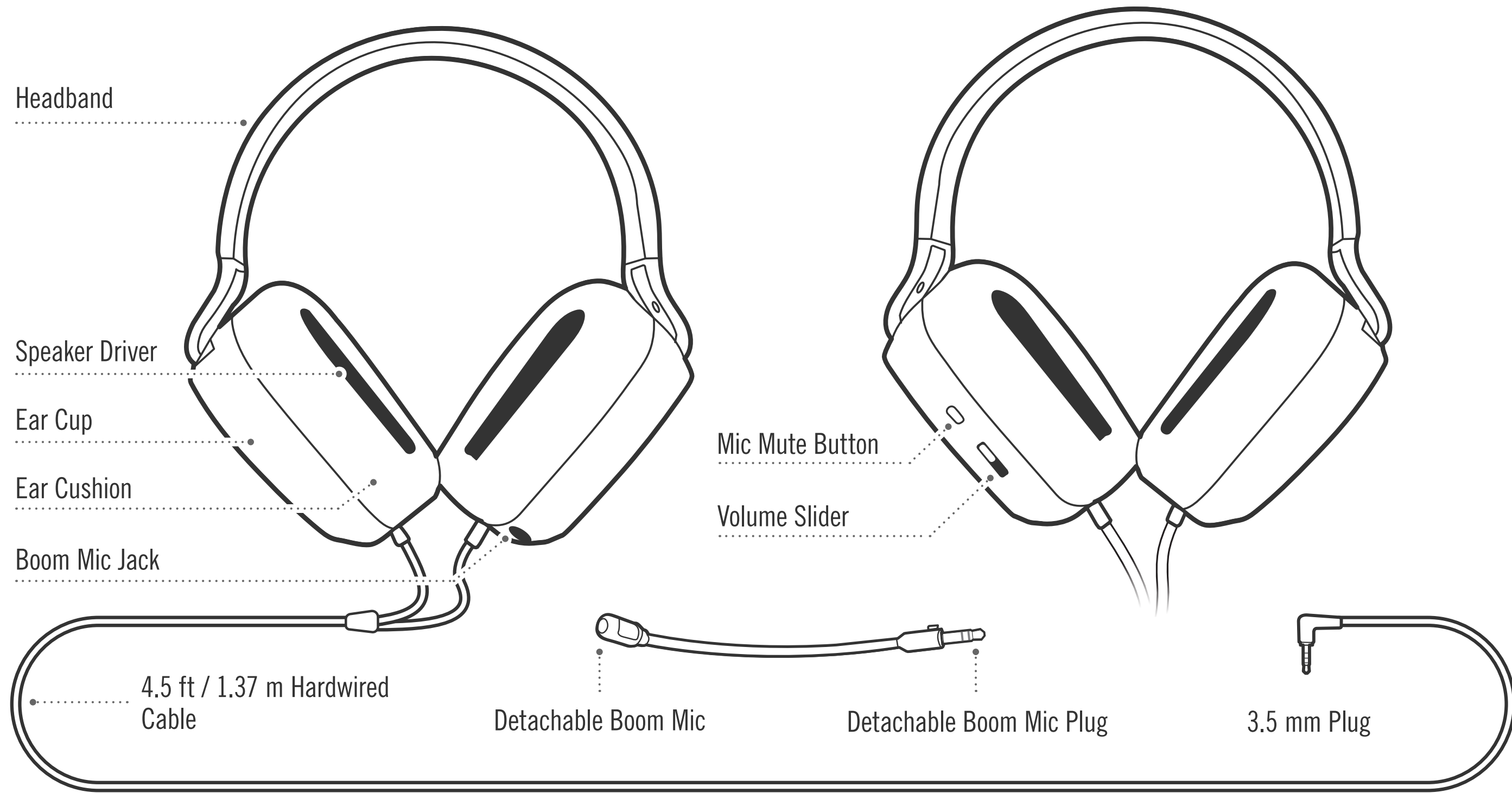
### WORKS WITH:

Nintendo Switch™ 2

Nintendo Switch™ – OLED Model

Nintendo Switch™





**CONTENTS**

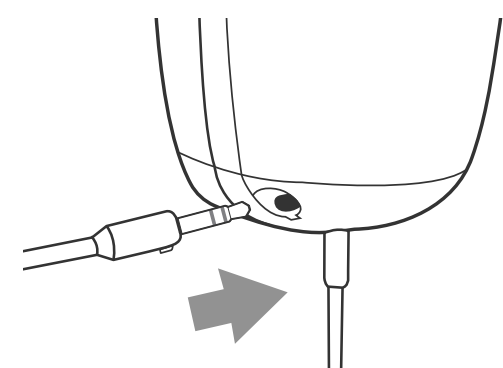
- PowerA Wired Stereo Headset for Nintendo Switch™ 2
- Detachable Boom Mic
- Quick Start Guide

**COMPATIBILITY**

- ✓ Nintendo Switch™ 2
- ✓ Nintendo Switch™ – OLED Model
- ✓ Nintendo Switch™
- ✓ Nintendo Switch™ Lite

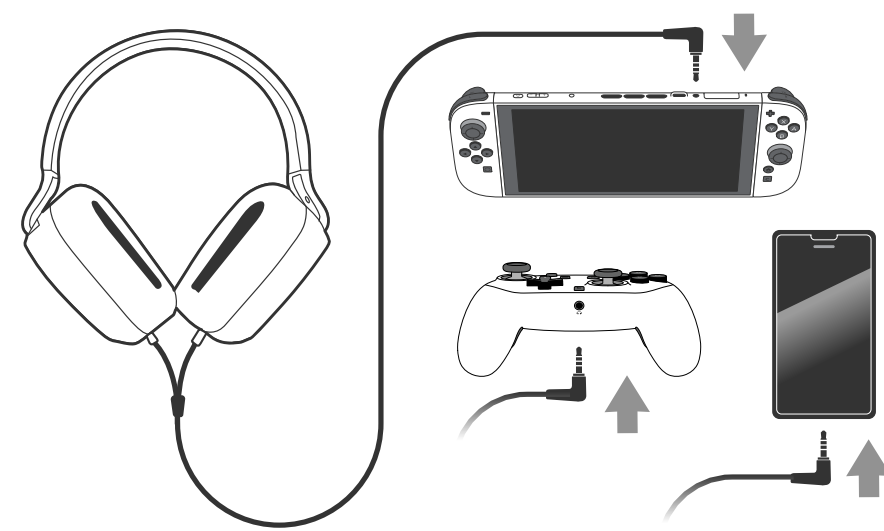
**BOOM MIC INSTALLATION**

Fully insert the boom mic plug on the detachable boom mic into the boom mic jack on the headset ensuring that the notches line up.



**SETUP**

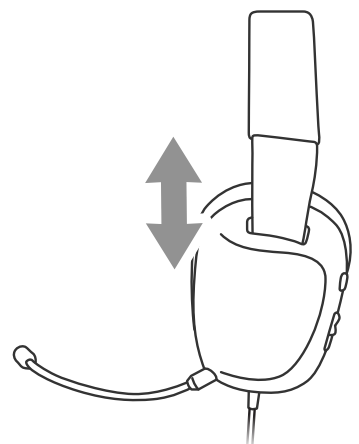
1. Connect the 3.5 mm plug of the headset into the 3.5 mm jack on the Nintendo Switch™ 2 console, Nintendo Switch™ console, controller with 3.5 mm jack, or other device.



2. To avoid hearing damage, follow the steps in the “ADJUST VOLUME” section to lower the volume before placing the headset over your ears to avoid being surprised by high volume. Once the headset is on, slowly raise the volume to the desired level. Do not use high volume settings for an extended period of time. While the Nintendo Switch™ 2 or Nintendo Switch™ console will remember your last volume setting for a 3.5 mm device, it is recommended to always follow this step first to avoid hearing damage.

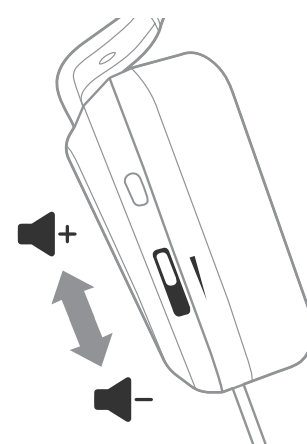
**ADJUSTING HEADSET**

To adjust the headband size, move the earcup up or down the headband rail to the desired position. The left and right side can be adjusted individually.



**ADJUST VOLUME**

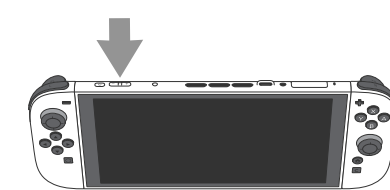
- Adjust volume using the volume slider on the left earcup. Slide up to increase volume or slide down to decrease volume.



- Volume levels can also be adjusted directly on the device. For Nintendo Switch™ 2 or Nintendo Switch™ systems, please use one of the following methods:

**Console Volume Buttons:**

Locate the volume buttons on top of the Nintendo Switch™ 2 or Nintendo Switch™ console. Press either the volume down



or volume up button to adjust the volume level.

**Quick Settings:** Open the Quick Settings menu on the Nintendo Switch™ 2 or Nintendo Switch™ system by holding down the HOME button for 2 seconds. The Quick Settings menu will pop up on screen. Scroll down to volume level and adjust the volume level slider to the desired level.

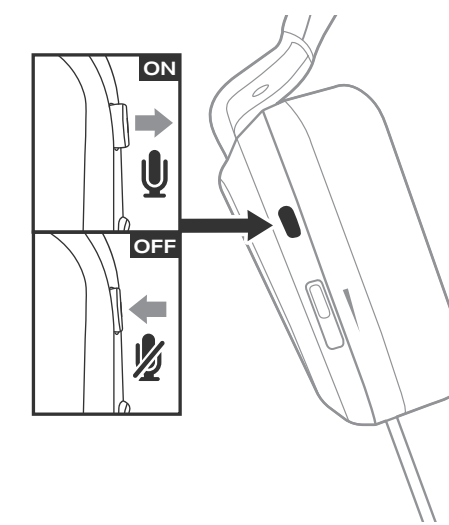
**GameChat (Nintendo Switch™ 2 only):** If in a GameChat session on a Nintendo Switch™ 2 system, press the C button to open GameChat settings. In this menu, select the audio settings to adjust volume.



**MICROPHONE CONTROLS**

The left ear cup on the headset features a mic mute button, which can be pressed to mute or unmute the mic.

- If the mic mute button is popped out, then the mic is active.
- If the mic mute button is pressed in, then the mic is muted.



**NOTE:** If in a GameChat session on a Nintendo Switch™ 2 system, you can also mute the mic from GameChat settings. Press the C button to open GameChat settings, then adjust the mic mute setting. This setting works independently from the mic mute button on the headset. If the headset mic mute button is pressed in, the mic will stay muted regardless of GameChat settings.

**ADDITIONAL AUDIO SETTINGS**

Additional audio settings are available on the Nintendo Switch™ 2. From the ‘Home’ screen, select ‘System Settings’, and then select ‘Audio’.

- The Nintendo Switch™ 2 offers the ability to test the audio output and microphone input in this section.

For Nintendo Switch™, from the ‘Home’ screen, select ‘System Settings’, ‘System’, and then scroll down to the audio setting section.

**NOTE:**

- Please ensure your Nintendo Switch™ 2 or Nintendo Switch™ system is using the most recent system update

for optimal compatibility. Check your Nintendo Switch™ 2 or Nintendo Switch™ system for any updates via “System Settings” on the HOME menu.

- Only some software titles support microphone or chat function. Please check the software title manual for compatibility or support.
- You can limit the maximum volume on the Nintendo Switch™ 2 or Nintendo Switch™ system:
  - Nintendo Switch™ 2: From the ‘Home’ screen, select ‘System Settings’, ‘Audio’, and then toggle on ‘Lower Max Headphone Volume’.
  - Nintendo Switch™: From the ‘Home’ screen, select ‘System Settings’, ‘System’, ‘Lower Max Headphone Volume’, and select ‘On’.

• The Nintendo Switch™ 2 or Nintendo Switch™ system only supports one audio output. When a headset or headphone is connected to the controller, audio to all other devices, including HDMI connected devices, will be disabled. When connecting more than one USB audio device, only the first device connected will have audio output.

- To avoid hearing damage, do not use high volume settings for an extended period.

- Device must have a 3.5 mm jack to use these wired earbuds. Otherwise, an adapter may be needed (sold separately).

**SPEAKER SPECIFICATIONS**

Frequency Response . . . . . 20 Hz – 20 kHz  
 Transducer Type . . . . . Dynamic/Moving Coil – 50 mm  
 Impedance . . . . . 32Ω  
 Maximum Input . . . . . 30 mW  
 Sensitivity . . . . . 110 dB ± 3 dB (@1 kHz)  
 THD . . . . . < 1% (@ 1 kHz @ 100 dB)

**MICROPHONE SPECIFICATIONS**

Frequency Response . . . . . 100 Hz – 10 kHz  
 Transducer Type . . . . . Electret Condenser  
 Directivity . . . . . Omnidirectional  
 Sensitivity . . . . . -42 dB ± 3 dB

**HEADSET SPECIFICATIONS**

Connector . . . . . 3.5 mm TRRS CTIA  
 Cable Length . . . . . 4.5 ft. / 1.37 m  
 Weight . . . . . 225 g  
 Ear Cup Type . . . . . Over-Ear  
 Fabric Material . . . . . 100% Polyester

**TROUBLESHOOTING**

For latest FAQs and support with your authentic PowerA accessories, please visit [PowerA.com/Product-Support/](https://www.powera.com/Product-Support/).

**Q1. Why do I hear static, no sound, or audio out of one side only?**

- A1. Check that the 3.5 mm plug is fully plugged into the device.
- A2. Confirm that the volume is turned up on the headset,

console, or device.

- A3. Confirm that your device has the latest system update or firmware installed. Refer to the device’s user manual.
- A4. Unplug the headset and then re-connect it to the device, following the steps in the SETUP section.
- A5. On Nintendo Switch™ 2, run the “Test Output” test to confirm audio output is working. From the ‘Home’ screen, select ‘System Settings’, ‘Audio’, and then ‘Test Output’. Follow the on-screen instructions.
- A6. If available, test the headset on another device to confirm it is operating correctly.

**Q2. Why can’t my friends hear me?**

- A1. Check that the boom mic plug is fully plugged into the headset.
- A2. Confirm that the mic mute button is not pressed in.
- A2. Toggle the mic mute button a couple times so that it is back in the popped-out position (mic is active).
- A3. Mute the mic by pressing the mic mute button so that the button is in the pressed in position. Then unplug the headset and re-connect it to the device. Once audio is playing through the headset again, unmute the mic by pressing the mic mute button so that it is back in the popped-out position.
- A4. If in a GameChat session, press the “C” button and confirm the mic is not muted on-screen.
- A5. On Nintendo Switch™ 2, run the “Test Microphone” test to confirm the microphone is working. From the ‘Home’ screen, select ‘System Settings’, ‘Audio’, and then ‘Test Microphone’. Follow the on-screen instructions.
- A6. Confirm the software title supports chat function or microphone function by referencing the software title manual. If chat and microphone are supported, check software title menu for audio settings.

**CONTACT/SUPPORT**

For support with your authentic PowerA accessories, please visit [PowerA.com/Product-Support/](https://www.powera.com/Product-Support/).

**WARRANTY**

2-Year Limited Warranty: Visit [PowerA.com/Warranty-Policy/](https://www.powera.com/Warranty-Policy/) for details.

**ADDITIONAL LEGAL**

© 2026 ACCO Brands. All Rights Reserved. PowerA and PowerA Logo are trademarks of ACCO Brands. All other registered and unregistered trademarks are the property of their respective owners.

© Nintendo. Nintendo Switch is a trademark of Nintendo.

ACCO Brands USA LLC  
 4 Corporate Drive, Lake Zurich, IL 60047

[ACCOBRANDS.com](https://www.accobrands.com) | [POWERA.com](https://www.powera.com)