

Kensington®

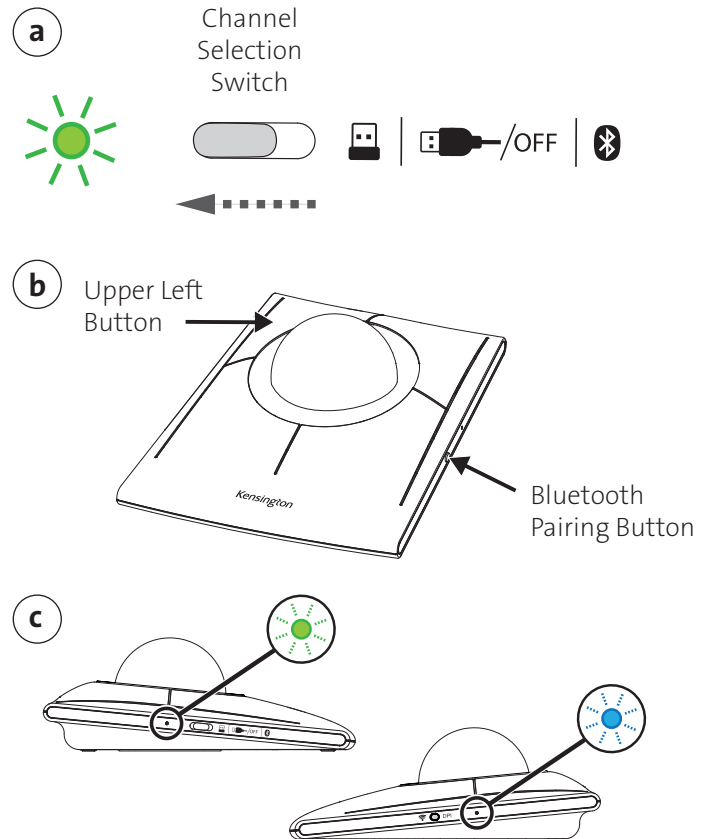
SlimBlade™ Pro 2.4GHz Replacement Dongle

PAIRING GUIDE



1. Place SlimBlade Pro trackball into Pairing Mode

- Slide the channel selection switch to the 2.4GHz mode.
- When the status LED on the left side flashes green, press and hold the left upper button and Bluetooth pairing button together for three seconds to enter pairing mode.
- The green LED indicator on the left side and the blue LED indicator on the right side will both flash quickly, indicating that the trackball is now in pairing mode.



2. Connecting the 2.4GHz USB-A Dongle

- Insert the 2.4GHz USB-A dongle into an available USB-A port on the host computer, or connect it via the optional USB-A (female) to USB-C (male) adapter.
- It is recommended to position the trackball within 8 inches (20 centimeters) of the 2.4GHz USB-A dongle.

